

# Chemtrails are Coal Ash



- Since the mid 1990's, persistent jet trails have appeared in the sky, and have increased year after year

Fair Use Notice - This document may contain copyrighted material the use of which has not always been specifically authorized by the copyright owner. We are making such material available in our efforts to advance the understanding of humanity's problems and hopefully to help find solutions for those problems. We believe this constitutes a 'fair use' of any such copyrighted material as provided for in section 107 of the US Copyright Law. In accordance with Title 17 U.S.C. Section 107, the material in this document is distributed without profit to those who have expressed a prior interest in receiving the included information for research and educational purposes.

## Chemtrails are Coal Ash



- For two decades, it has been a mystery, as to what the jets are spraying on us

# Chemtrails are Coal Ash



- Finally, we know the source material of these jet chemtrails!
- Coal ash is re-processed to create the chemtrail base mixture.

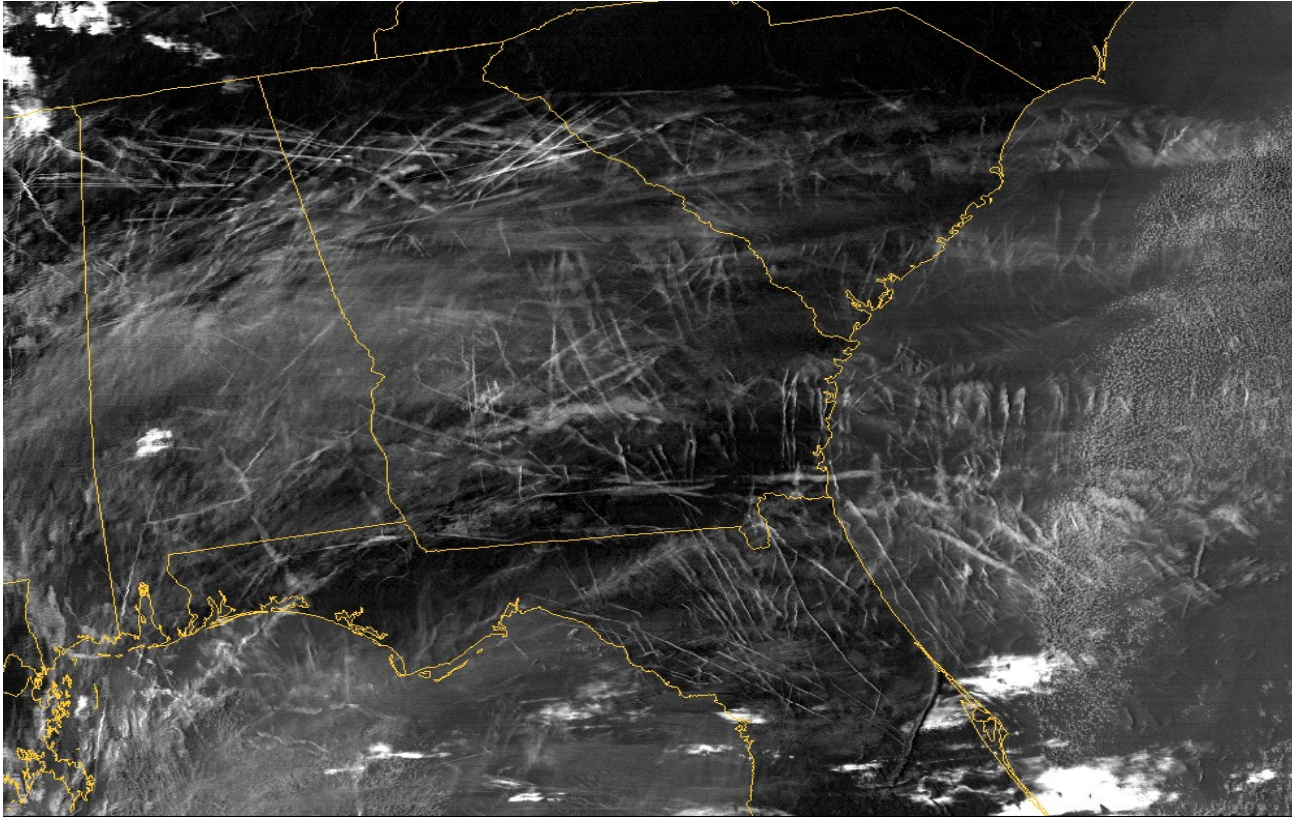


## Chemtrails are Coal Ash



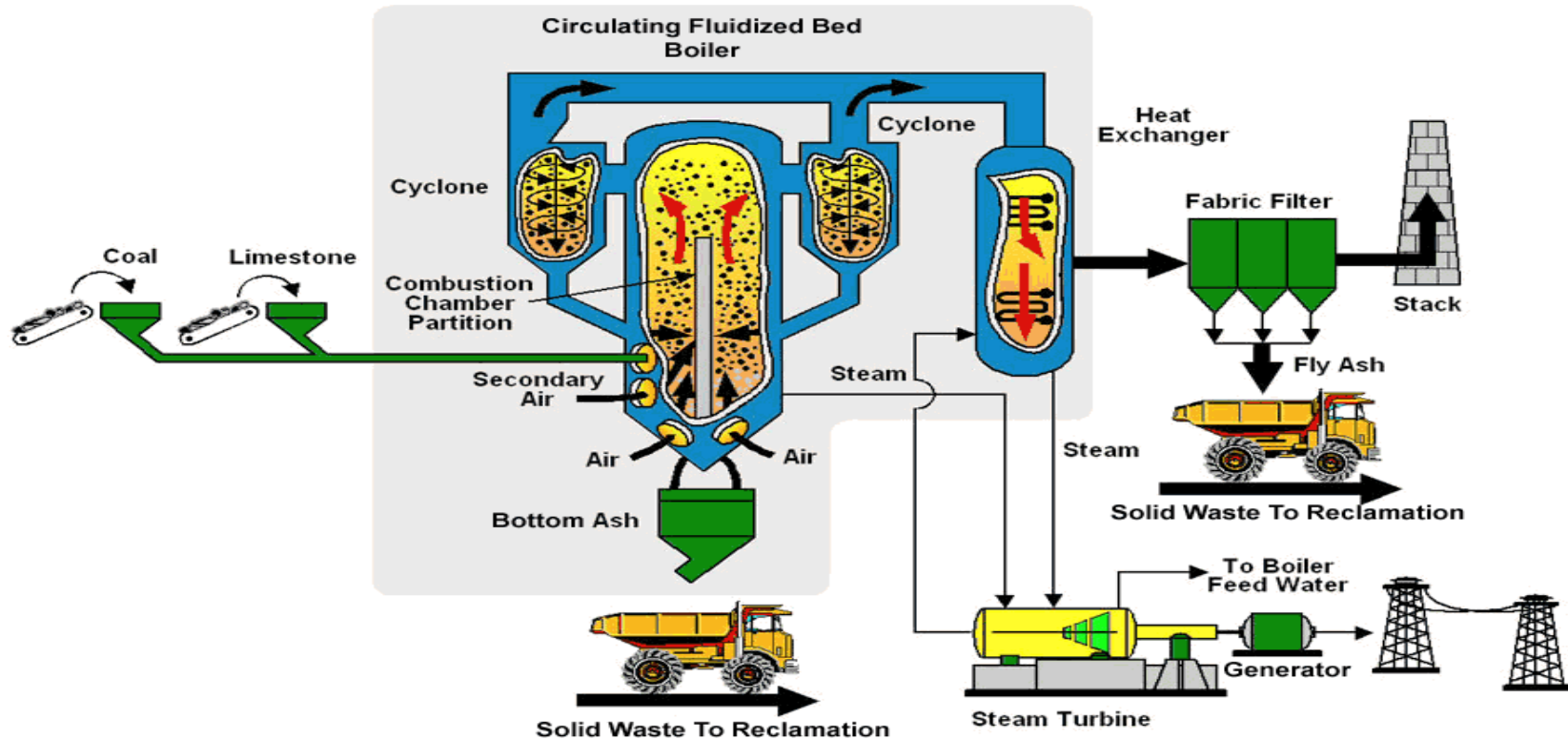
- Chemtrail residues in rainwater have the same mix of toxic metals, as those found in coal ash, from coal burning power plants

## Chemtrails are Coal Ash



- Such a huge amount of chemtrails is sprayed every day, that there is **NO OTHER** source for these nano-metal oxides, except coal ash

# Chemtrails are Coal Ash

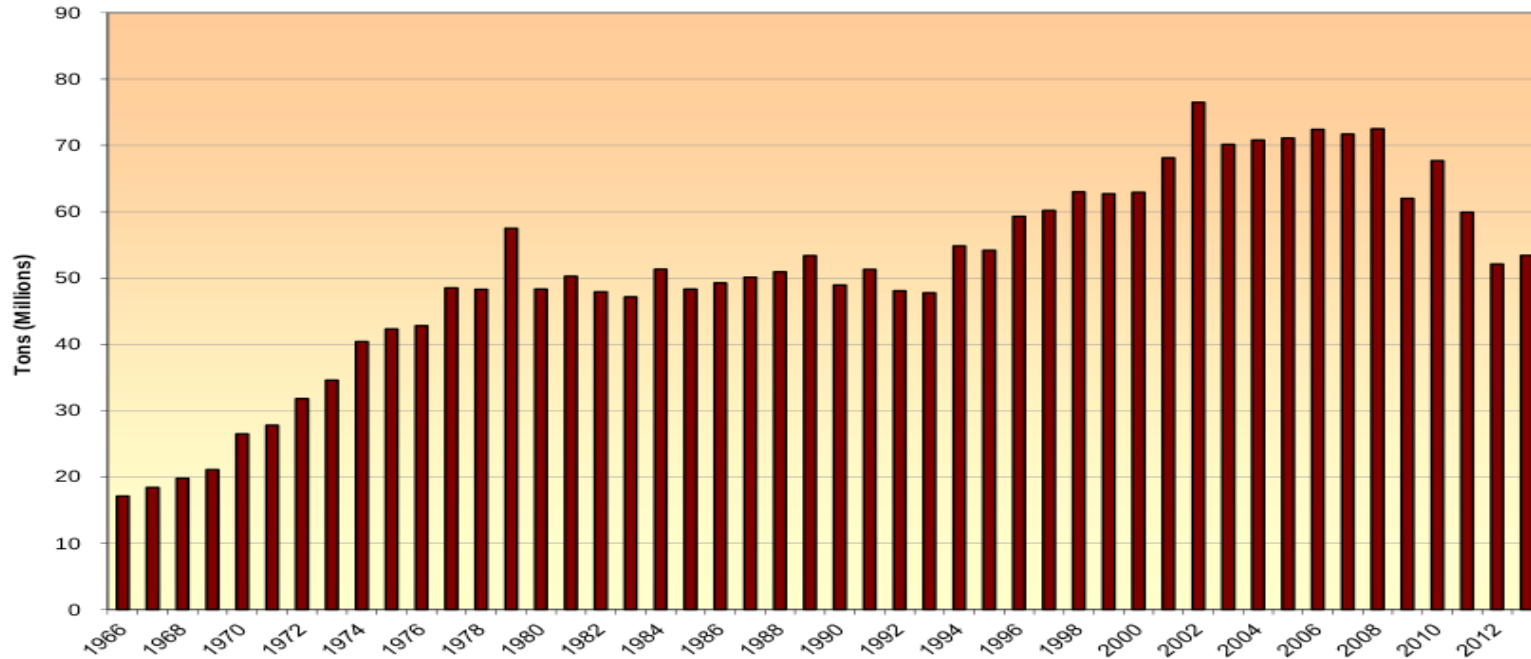


U.S. Dept. of Energy

- Fly ash, and bottom ash, are created at every coal fired power plant
- Fly ash is rich in aluminum oxide (about 30%), which is the main chemical found in chemtrail rainwater tests

# Chemtrails are Coal Ash

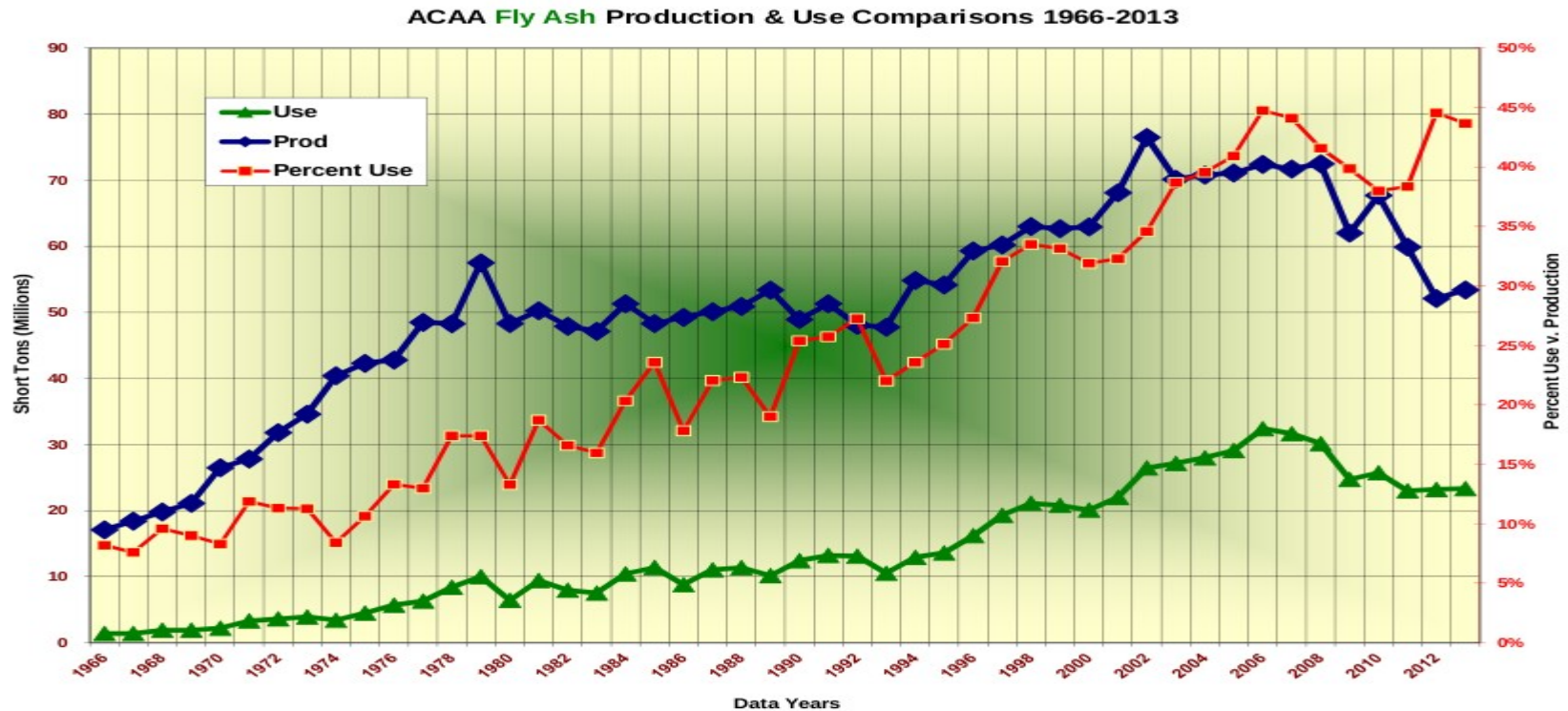
FLY ASH PRODUCTION  
by Year (1966-2013)



- Coal combustion waste, from power plants, is the biggest industrial waste stream in the world, with about 120 million tons created, each year, in the USA (alone).
- Over 50 million tons of fly ash is created in the USA, each year.



# Chemtrails are Coal Ash



- More than 40% of US coal ash production is re-processed into cement, road base, drywall, bauxite, shingles, plastic filler, and non-publicized uses, like chemtrail mix
- The use of fly ash has more than doubled, since chemtrails began, in the mid 1990's. Chemtrails account for millions of tons of coal ash re-use every year

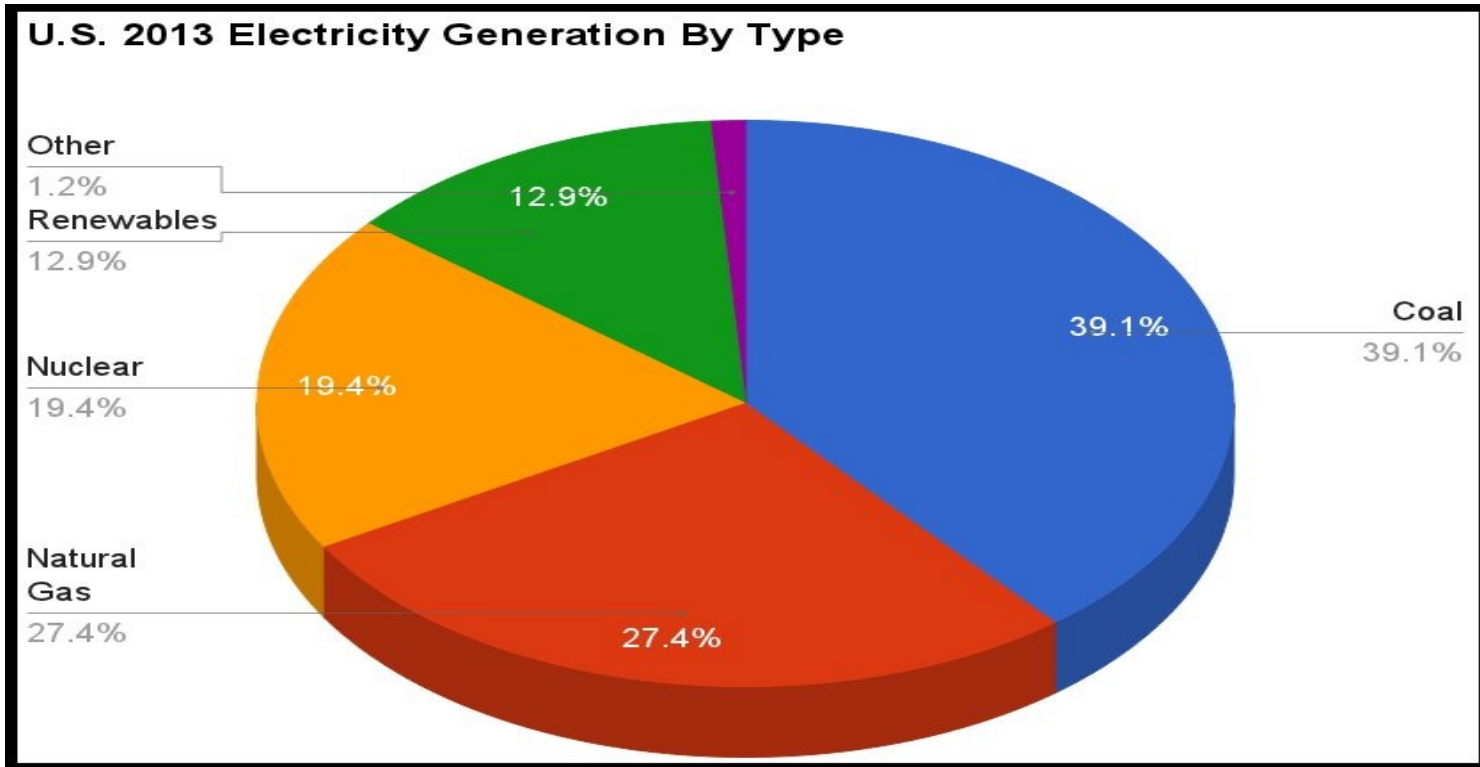


# Chemtrails are Coal Ash

## Applications

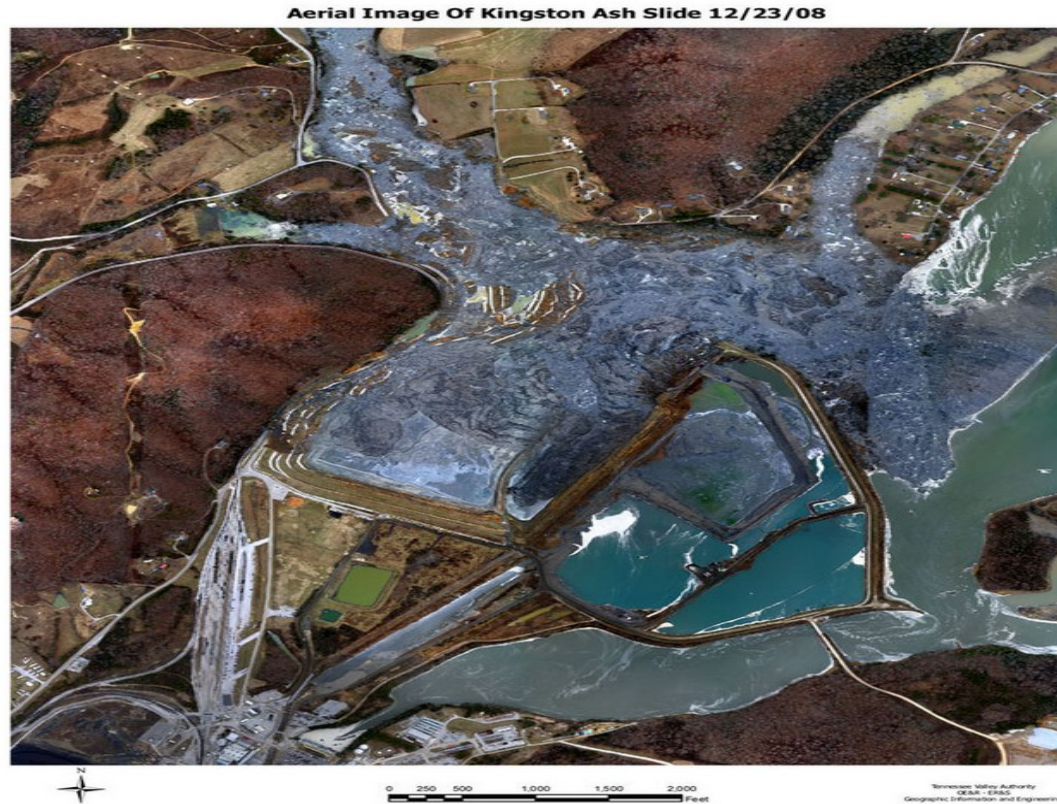
- Raw material in concrete products and grout
  - Feed stock in the production of cement
  - Fill material for structural applications and embankments
  - Ingredient in waste stabilization and/or solidification
  - Ingredient in soil modification and/or stabilization
  - Component of flowable fill
  - Component in road bases, sub-bases, and pavement
  - >Mineral filler in asphalt
- 
- Secret chemtrail mix is labelled “Component of flowable fill” in coal ash industry documents

# Chemtrails are Coal Ash



- 39% of the electricity generated in the US, is made by burning coal
- Disposing of the ash, at each coal burning power plant, is a billion dollar problem, with most ash put in nearby landfills

# Chemtrails are Coal Ash



- After the Kingston coal ash spill, in 2008, the electric utility paid over 1 billion dollars, and spent over five years, to clean it up
- The secret chemtrail program receives fly ash from coal fired power plants at very low cost



# Chemtrails are Coal Ash



An aerial view of the Ghent CCR facility shows the scale of the project.

- Railroad, or barge, transportation makes it easy to move millions of tons of processed fly ash to secret air bases. All coal electric utilities use transportation, to bring the coal to the plant.
- The low cost of the fly ash, the existing processing facilities, the easy transportation (all out in the open), and the lack of public awareness concerning coal waste, make fly ash the ideal source material, for the secret chemtrail program.

# Chemtrails are Coal Ash

## United States Patent [19]

**Chang et al.**

---

[54] **STRATOSPHERIC WELSBACH SEEDING FOR REDUCTION OF GLOBAL WARMING**

[75] **Inventors:** David B. Chang, Tustin; I-Fu Shih, Los Alamitos, both of Calif.

[73] **Assignee:** Hughes Aircraft Company, Los Angeles, Calif.

[21] **Appl. No.:** 513,145

[22] **Filed:** Apr. 23, 1990

1. A method of reducing atmospheric warming due to the greenhouse effect resulting from a layer of gases in the atmosphere which absorb strongly near infrared wavelength radiation, comprising the step of dispersing tiny particles of a material within the gases' layer, the particle material characterized by wavelength-dependent emissivity or reflectivity, in that said material has high emissivities with respect to radiation in the visible and far infrared wavelength spectra, and low emissivity in the near infrared wavelength spectrum, whereby said tiny particles provide a means for converting infrared heat energy into far infrared radiation which is radiated into space.

2. The method of claim wherein said material comprises one or more of the oxides of metals.

3. The method of claim 1 wherein said material comprises aluminum oxide.

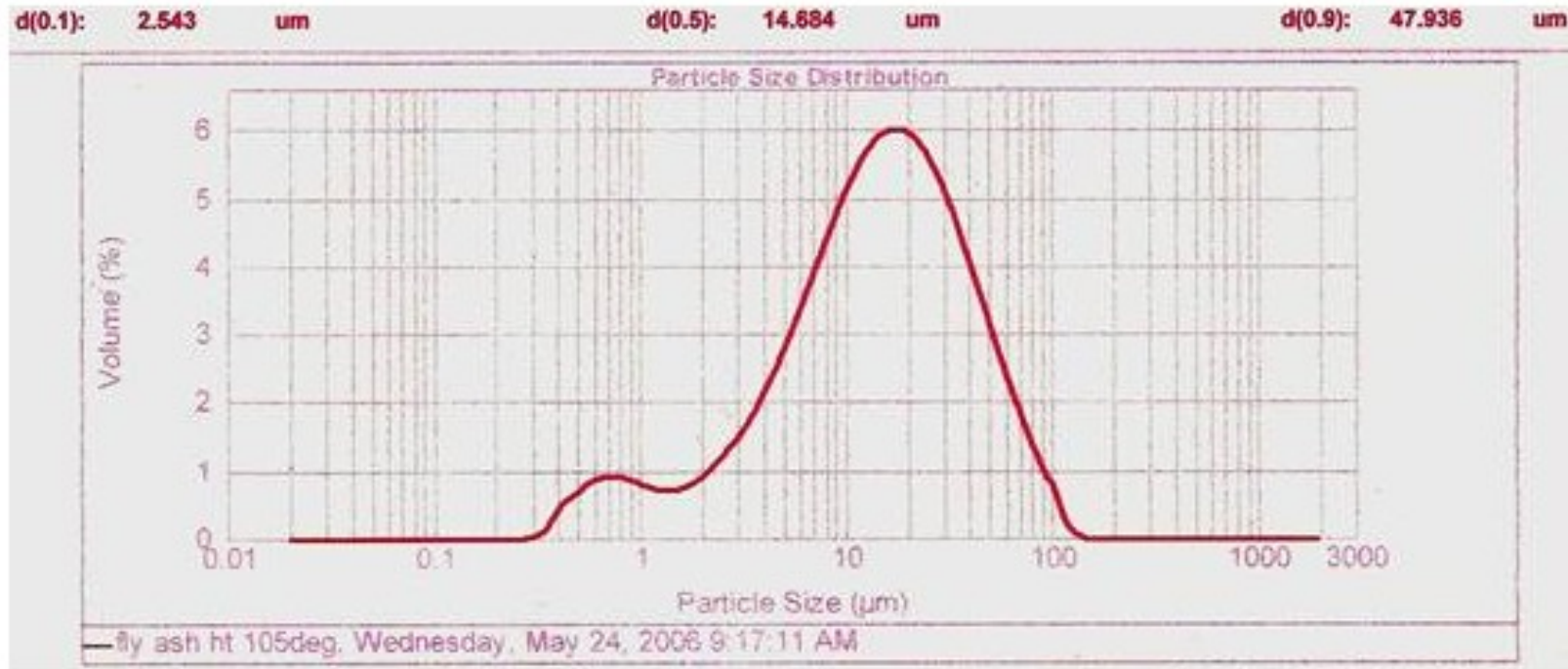
4. The method of claim 1 wherein said material comprises thorium oxide.

5. The method of claim 1 wherein said particles are dispersed by seeding the stratosphere with a quantity of said particles at altitudes in the range of seven to thirteen kilometers above the earth's surface.

6. The method of claim 1 wherein the size of said particles is in the range of ten to one hundred microns.

- Patent 5003186 describes cooling the Earth with metal oxides
- Fly ash has the right size, and mixture of metal oxides, so a minimum amount of processing is needed to create a ready to spray, water based, slurry

# Chemtrails are Coal Ash



*Figure 2. Particle size distribution profile for Fly Ash Heat treated at 105°C*

- Coal “fly” ash has the correct size (10 to 100 microns according to Patent), to be used as a welsbach material, when sprayed in the upper atmosphere

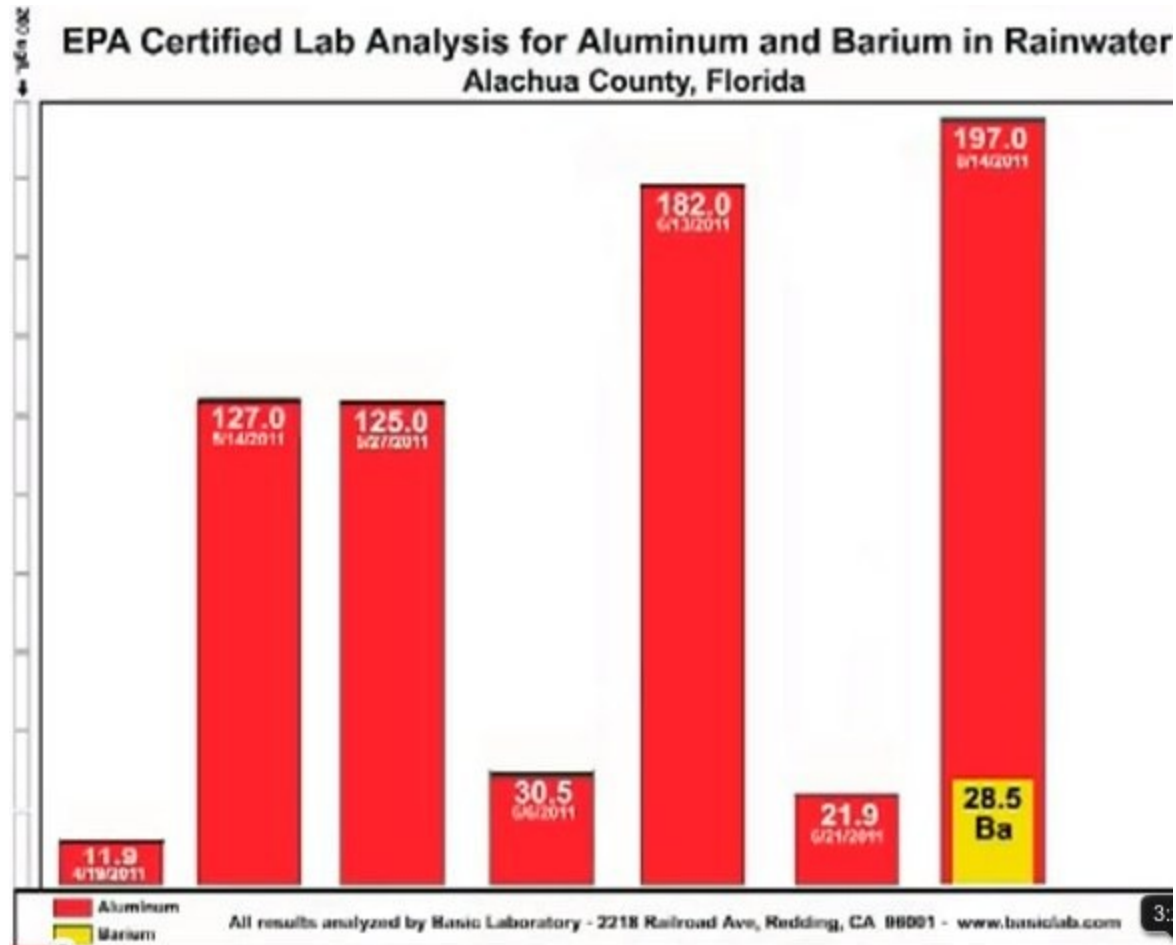


# Chemtrails are Coal Ash

Constituent	Result	PQL	Units
<b>Metals, Total</b> <sup>P:15</sup>			
Aluminum	700	50*	ug/L
Antimony	ND	1	ug/L
Arsenic	ND	2	ug/L
Barium	23.9	0.2	ug/L
Beryllium	ND	0.2	ug/L
Cadmium	0.3	0.2	ug/L
Chromium	3	1	ug/L
Lead	2.2	0.2	ug/L
Mercury	0.03	0.02	ug/L
Nickel	5	1	ug/L
Selenium	ND	2	ug/L
Silver	ND	1	ug/L
Thallium	ND	0.2	ug/L
Vanadium	4	2	ug/L

- In addition to aluminum, rainfall testing shows a variety of toxic metals, which are ALL found in coal ash (depending on the source of the coal)
- This rainfall test from Chico, California, has high amounts of aluminum and barium

# Chemtrails are Coal Ash



- This rainfall test from Alachua county, Florida, shows high aluminum everyday, and high barium on a single day

# Chemtrails are Coal Ash

TABLE 6 Chemical Composition of U.S. Coals<sup>a,b</sup>

Element	Anthracite	Bituminous	Sub-bituminous	Lignite	Average	Estimated Worldwide Average <sup>c</sup>
<b>Major elements</b>						
(percent)						
Sulfur (S), total	0.8	2.7	0.7	1.7	2.0 <sup>d</sup>	2.0
Sulfur (S), sulfate	0.02	0.16	0.04	0.24	0.12	—
Sulfur (S), pyritic	0.35	1.70	0.36	0.68	1.19	—
Sulfur (S), organic	0.48	0.88	0.32	0.75	0.70	—
Phosphorus (P)	—	—	0.10	0.007	—	0.05
Silicon (Si)	2.7	2.6	2.0	4.9	2.6	2.8
Aluminum (Al)	2.0	1.4	1.0	1.6	1.4	1.0
Calcium (Ca)	0.07	0.33	0.78	1.2	0.54	1.0
Magnesium (Mg)	0.00	0.08	0.18	0.31	0.12	0.02
Sodium (Na)	0.05	0.04	0.10	0.21	0.06	0.02
Potassium (K)	0.24	0.21	0.06	0.20	0.18	0.01
Iron (Fe)	0.44	2.2	0.52	2.0	1.6	1.0
Manganese (Mn)	0.002	0.01	0.006	0.015	0.01	0.005
Titanium (Ti)	0.15	0.08	0.05	0.12	0.08	0.05

- Coal ash is composed primarily of oxides of silicon, aluminum, iron, calcium, magnesium, titanium, thallium, sodium, potassium, arsenic, mercury, and sulfur, plus small quantities of uranium and thorium.



# Chemtrails are Coal Ash

Minor and trace elements (ppm)						
Antimony (Sb)	0.9	1.4	0.7	0.7	1.1	3.0
Arsenic (As)	6	25	3	6	15	5.0
Barium (Ba)	100	100	300	300	150	500
Beryllium (Be)	1.5	2.0	0.7	2.0	2.0	3
Bismuth (Bi)	—	—	<0.6	<0.8	<0.7	5.5
Boron (B)	10	50	70	100	50	75
Bromine (Br)	—	—	2.3	3.2	2.6	—
Cadmium (Cd)	0.3	1.6	0.2	1.0	1.3	—
Cerium (Ce)	—	—	5.5	12.3	7.7	11.5
Cesium (Cs)	—	—	0.40	0.25	0.4	—
Chlorine (Cl)	—	—	255	110	207	1000
Chromium (Cr)	20	15	7	20	15	10
Cobalt (Co)	7	7	2	5	7	5
Copper (Cu)	27	22	10	20	19	15
Dysprosium (Dy)	—	—	2.7	1.4	2.2	—
Erbium (Er)	—	—	0.46	0.16	0.34	0.6
Europium (Eu)	—	—	0.61	0.13	0.45	0.7
Fluorine (F)	61	77	63	94	74	—
Gadolinium (Gd)	—	—	0.13	0.21	0.17	1.6
Gallium (Ga)	7	7	3	7	7	7
Germanium (Ge)	—	—	0.47	1.20	0.71	5
Hafnium (Hf)	—	—	0.75	0.30	0.60	—
Holmium (Ho)	—	—	0.13	0.06	0.11	0.3
Iodine (I)	—	—	1.0	1.3	1.10	—
Lanthanum (La)	—	—	7.5	3.2	6.1	10
Lead (Pb)	10	22	5	14	16	25
Lithium (Li)	33	23	7	19	20	65
Lutetium (Lu)	—	—	0.09	0.05	0.08	0.07
Mercury (Hg)	0.15	0.20	0.12	0.16	0.18	0.012
Molybdenum (Mo)	2	3	1.5	2	3	5
Neodymium (Nd)	—	—	50	11	37	4.7
Nickel (Ni)	20	20	5	15	15	15
Niobium (Nb)	—	—	5.4	2.7	4.5	—

- Barium (Ba) is usually present in coal ash, and most chemtrails

# Chemtrails are Coal Ash

Project: Nov 2013, Jan 2014  
 Date Received: 1/17/14 12:23  
 Date Prepared: 1/17/14

Extraction Method E200.8  
 Analytical Method: E200.8  
 Unit: µg/L

## Metals

Client ID	Lab ID	Matrix/ExtType	Date Collected	Instrument	Batch ID
JAN.11.14Rain	1401497-001A	Water/TOTAL	01/11/2014	ICP-MS1	86164
<u>Analytes</u>	<u>Result</u>		<u>RL</u>	<u>DF</u>	<u>Date Analyzed</u>
Aluminum	280		50	1	01/23/2014 10:16
Barium	32		5.0	1	01/23/2014 10:16
Silver	ND		0.19	1	01/23/2014 10:16
Strontium	54		20	1	01/23/2014 10:16
<u>Surrogates</u>	<u>REC (%)</u>		<u>Limits</u>		
Tb 350.917	94		70-130		01/23/2014 10:16
NOV2013RAIN	1401497-002A	Water/TOTAL	11/13/2013	ICP-MS1	86194
<u>Analytes</u>	<u>Result</u>		<u>RL</u>	<u>DF</u>	<u>Date Analyzed</u>
Aluminum	86		50	1	01/23/2014 10:23
Barium	33		5.0	1	01/23/2014 10:23
Silver	ND		0.19	1	01/23/2014 10:23
Strontium	190		20	1	01/23/2014 10:23

- This California rainfall test shows Aluminum, Barium, and strontium, over a two month period

# Chemtrails are Coal Ash

TABLE 5 Possible Mineral Associations of Trace Elements with Mineral Matter in Coal<sup>a</sup>

Element	Mineral Association
Arsenic	Arsenopyrite (FeAsS)
Barium	Barite (BaSO <sub>4</sub> )
Boron	Illite and tourmaline (complex aluminum silicates)
Cadmium	Sphalerite [(Zn,Cd)S]
Cobalt	Linnaeite (Co <sub>3</sub> S <sub>4</sub> )
Copper	Chalcopyrite (CuFeS <sub>2</sub> )
Fluorine	Fluorapatite [Ca <sub>5</sub> (PO <sub>4</sub> ) <sub>3</sub> (F, OH)]
Lead	Galena (PbS)
Manganese	Siderite [(Fe,Mn)CO <sub>3</sub> ] and calcite [(Ca,Mn)CO <sub>3</sub> ]
Mercury	Pyrite (FeS <sub>2</sub> )
Molybdenum	Molybdenite (MoS <sub>2</sub> )
Nickel	Millerite (NiS)
Phosphorus	Fluorapatite [Ca <sub>5</sub> (PO <sub>4</sub> ) <sub>3</sub> (F, OH)]
Selenium	Pyrite (FeS <sub>2</sub> )
Strontium	Goyazite group (hydrous strontium aluminum phosphates)
Zinc	Sphalerite (ZnS)
Zirconium	Zircon (ZrSiO <sub>4</sub> )

- Fly ash with low barium may have Barite mined, and added before spraying
- Coal ash has dangerous amounts of radioactive uranium, radium, and thorium
- Chemtrailed areas are being poisoned with depleted uranium (naturally occurring U-238)

# Chemtrails are Coal Ash

TABLE 6 (continued)

Element	Anthracite	Bituminous	Sub-bituminous	Lignite	Average	Estimated Worldwide Average <sup>C</sup>
Praseodymium (Pr)	—	—	6.1	2.7	2.7	2.2
Rubidium (Rb)	—	—	5.3	0.98	2.90	100
Samarium (Sm)	—	—	0.50	0.27	0.42	1.6
Scandium (Sc)	5	3	2	5	3	5
Selenium (Se)	3.5	4.6	1.3	5.3	4.1	3
Silver (Ag)	—	—	0.17	0.26	0.20	0.50
Strontium (Sr)	100	100	100	300	100	500
Tellurium (Te)	—	—	0.1	0.1	0.1	—
Terbium (Tb)	—	—	0.1	0.1	0.1	0.3
Thallium (Tl)	—	—	0.1	0.12	0.1	—
Thorium (Th)	—	—	2.3	1.2	1.9	—
Thulium (Tm)	—	—	0.07	0.07	0.07	—
Tin (Sn)	—	—	1.7	1.3	1.6	—
Tungsten (W)	—	—	2.2	3.3	2.5	—
Uranium (U)	1.5	1.9	1.3	2.5	1.6	1.0
Vanadium (V)	20	20	15	30	20	25
Ytterbium (Yb)	1	1	0.5	1.5	1	0.5
Yttrium (Y)	10	10	5	15	10	10
Zinc (Zn)	16	53	19	30	39	50
Zirconium (Zr)	50	30	20	50	30	—

- Radioactive uranium is found in all coal ash
- Radioactive thorium is a welsbach material, and is found in the most common type of coal ash



## Chemtrails are Coal Ash

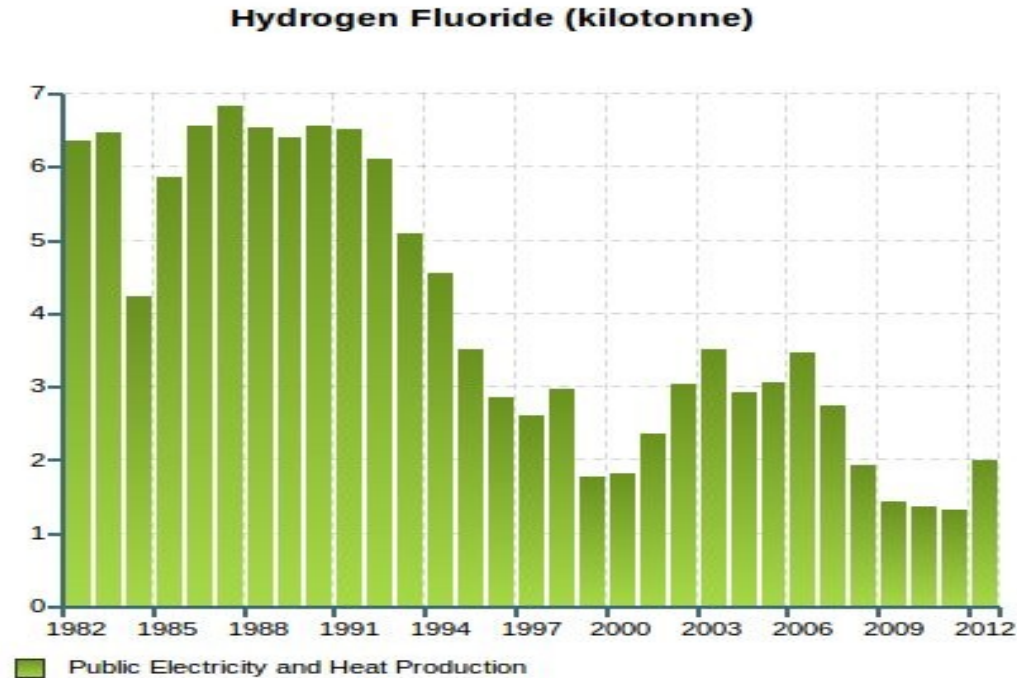
- Welsbach materials patent shows how aluminum oxide, thorium oxide, and other metal oxides, can reflect sunlight back into space, in an attempt to cool the planet
- However, barium is not mentioned, as a welsbach reflective material
- If barium is not a reflective metal, why is it being found in chemtrail rainwater tests?
- According to Jim Phelps, the "father" of the chemtrail program: barium is used to remove fluoride, from the atmosphere, caused by coal burning air pollution, before the fluoride can create methane from other hydrocarbons

## Chemtrails are Coal Ash



- A million metric tons of fluorine are released worldwide, each year.
- These fluoride compounds are extremely strong greenhouse gases, about 8,000 times worse than carbon dioxide, for trapping heat in the Earth's atmosphere

# Chemtrails are Coal Ash



- According to the Jim Phelps documents, chemtrails must be sprayed to protect the world from hydrogen fluoride, which is created by burning coal
- This is circular logic, i.e. artificial coal ash clouds must be used to save the Earth from burning coal???
- Why not have 100% fluoride scrubbers on all power plant smoke stacks?  
Why not stop all coal burning?

# Chemtrails are Coal Ash



- Chemtrail skeptics say it is impossible to create, and purify, a worldwide supply of aluminum, barium, strontium, and other metal oxides, without being detected
- Every coal fired power plant has an area for processing the coal ash, for either disposal, or for re-processing, and shipping to another area

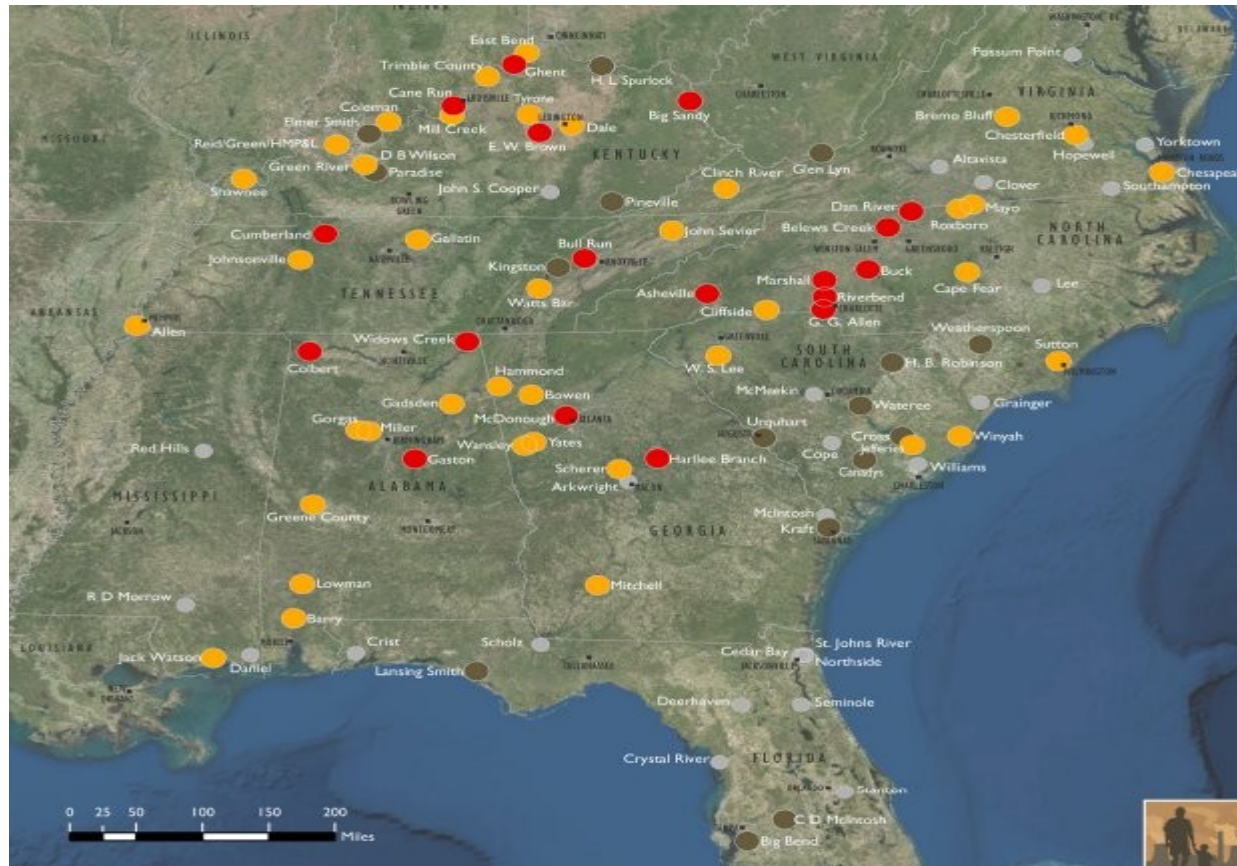


# Chemtrails are Coal Ash



- Skeptics say chemtrails don't exist, because it is impossible to create, and transport, so much spray mix all over the country, without someone finding out
- Coal ash is already shipped all over the country, using trucks, rail cars, and barges, so it is easy to move the chemtrail mix, out in the open, to USAF, and secret airbases, all over the USA.

# Chemtrails are Coal Ash



- Here is a map of the coal ash plants in the USA. Use Google maps to see which ones have re-processing plants, for processing the chemtrail slurry:  
Make your own custom map at: [southeastcoalash.org](http://southeastcoalash.org)

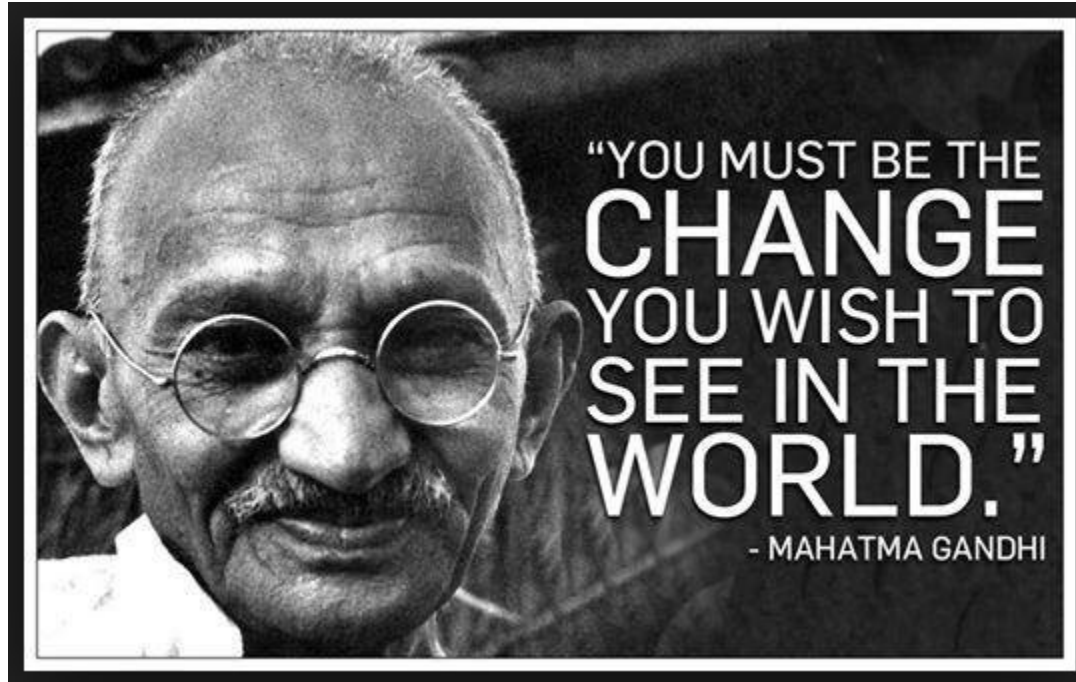


## Chemtrails are Coal Ash



- Local groups, near the coal ash plants, can write down the numbers on railroad “covered hopper” cars, when they leave the coal ash re-processing plants
- These same railroad cars will be seen arriving at chemtrail air bases (like Tinker AFB). This will identify which coal burning power plants are supplying the chemtrail materials

## Chemtrails are Coal Ash



- Public disclosure, lawsuits, and non-violent civil disobedience can stop the filling, and movement of these railroad cars. Stopping these rail cars, will stop the chemtrail program



## Chemtrails are Coal Ash

- We must also stop burning coal, AND stop the unregulated re-processing of coal ash
- Now that we know where chemtrails come from, we have the power to end the chemtrail program, which is killing our planet
- All coal fired electric generators, and their coal ash processing plants, must be tightly regulated, worldwide, to end the spraying of toxic metals from jet tankers (and the release of deadly fluoride into the air)

## Chemtrails are Coal Ash

- Why would the owners of coal fired power plants WANT to help with chemtrails?
- Who would benefit from distracting people from coal smokestack pollution? The polluters---folks like the Koch brothers, who make profits based on lack of regulations of the pollution they produce on a daily basis.
- Anything which distracts people from the actual pollution caused by large fossil fuel producers, like the Koch brothers, helps them suppress efforts to regulate pollution.
- The Koch brothers have invested millions of dollars, to promote climate change as a hoax, because if taken seriously, it would create higher costs, which would reduce their profits.
- It makes perfect sense for the Koch brothers to shift the blame for high levels of pollution, away from their own industries, and onto the government, since it makes their pollution less noticeable, and less likely to be regulated.

## Chemtrails are Coal Ash



- Chemtrails will SUDDENLY end, when the owners of coal plants learn that attorneys, government regulators, and the ICC, are planning to prosecute them.
- Prosecuting the billionaire criminals is the goal we must work toward, so forward this video to activists, attorneys, and government regulators!

## Chemtrails are Coal Ash



- When you pay for coal fired electricity, you are paying for the chemtrail poisons, that are slowly killing you, your family, and all future generations!
- Refuse to buy electricity from any utility that burns coal

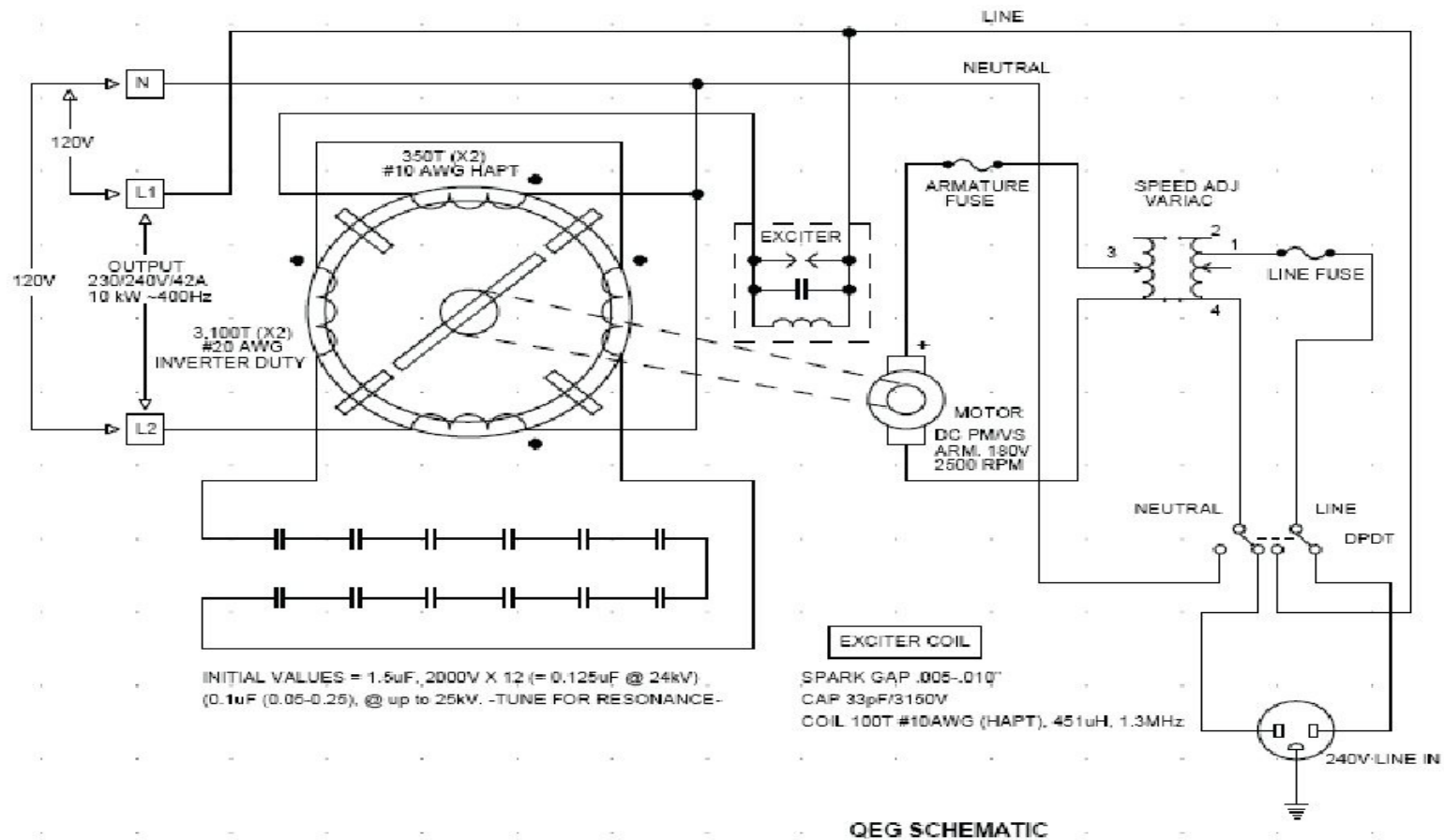


## Chemtrails are Coal Ash



- Worldwide, we must use non-violent civil disobedience, and legal tools, such as lawsuits, financial penalties, and state and federal regulation, to stop deadly chemtrail spraying
- Get involved in watching your local coal plant, railroad, or air base.
- We have to power to save our planet. There is still time, if we all do our part!

# Chemtrails are Coal Ash



- We MUST mass produce PROVEN, carbon-free energy sources! (example: Quantum Electric Generator)

# Chemtrails are Coal Ash



- Think about how you can help, and do it!
- If you don't help, the spraying WILL continue!
- A single neighborhood group can stop the toxic spraying, in your area!
- Search Youtube: "How to Stop Chemtrails and Haarp"

## Chemtrails are Coal Ash



- Get involved! Complaining does NOTHING!!!
- Watch the PBS documentary “A Force More Powerful”, to see how non-violent, civil disobedience, can overpower any tyrannical evil.
- Don't search for your heroes somewhere else!
- WE are the heroes, we've been waiting for!